

Specification

Nominal Voltage	12V	
Nominal Capacity(10HR)	33.0AH	
Dimensions	Length	195±2mm (7.68 inches)
	Width	130±2mm (5.12 inches)
	Container Height	164±2mm (6.46 inches)
	Total Height (with Terminal)	167±2mm (6.57 inches)
Approx Weight	Approx 11.2 kg (24.7lbs)	
Terminal	T6	
Container Material	ABS	
Rated Capacity	35.0 AH/1.75A	(20hr, 1.80V/cell, 25°C/77°F)
	33.0 AH/3.30A	(10hr, 1.80V/cell, 25°C/77°F)
	28.6 AH/5.73A	(5hr, 1.75V/cell, 25°C/77°F)
	26.1 AH/8.69A	(3hr, 1.75V/cell, 25°C/77°F)
	20.3 AH/20.3A	(1hr, 1.60V/cell, 25°C/77°F)
Max. Discharge Current	495A (5s)	
Internal Resistance	Approx 11.3mΩ	
Operating Temp. Range	Discharge	-15~50°C (5~122°F)
	Charge	0~40°C (32~104°F)
	Storage	-15~40°C (5~104°F)
Nominal Operating Temp. Range	25±3°C (77±5°F)	
Cycle Use	Initial Charging Current less than 9.9A. Voltage 14.4V~15.0V at 25°C(77°F)Temp. Coefficient -30mV/°C	
	Standby Use No limit on Initial Charging Current Voltage 13.5V~13.8V at 25°C(77°F)Temp. Coefficient -20mV/°C	
Capacity affected by Temperature	40°C (104°F)	103%
	25°C (77°F)	100%
	0°C (32°F)	86%
Self Discharge	Leoch LPL series batteries may be stored for up to 6 months at 25°C(77°F) and then a freshening charge is required. For higher temperatures the time interval will be shorter.	



Applications

- ◆ UPS and EPS
- ◆ Emergency light
- ◆ Railway signal and aircraft signal system
- ◆ Marine and powerstations
- ◆ Alarm and security system
- ◆ Electronic apparatus and equipment
- ◆ Communication power supply, DC power supply

Constant Current Discharge (Amperes) at 25 °C (77°F)

F.V/Time	5min	10min	15min	20min	30min	45min	1h	2h	3h	4h	5h	6h	8h	10h	20h
1.85V/cell	55.8	42.6	35.5	30.3	24.7	18.7	15.7	10.01	7.93	6.43	5.19	4.56	3.65	3.12	1.73
1.80V/cell	74.9	54.4	42.9	35.8	29.2	21.8	17.6	10.92	8.53	6.86	5.58	4.89	3.87	3.30	1.75
1.75V/cell	84.5	59.8	46.9	38.5	30.3	22.6	18.4	11.3	8.69	7.03	5.73	5.02	3.94	3.33	1.77
1.70V/cell	93.0	65.1	50.0	40.5	31.5	23.5	19.0	11.8	8.93	7.20	5.87	5.13	3.99	3.37	1.80
1.65V/cell	102.6	70.3	53.2	43.0	33.3	24.1	19.6	12.1	9.31	7.45	6.03	5.24	4.06	3.44	1.82
1.60V/cell	113.1	76.3	56.9	45.8	35.1	25.1	20.3	12.5	9.60	7.68	6.23	5.35	4.10	3.47	1.83

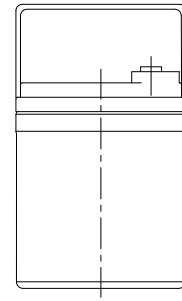
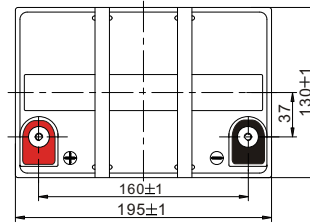
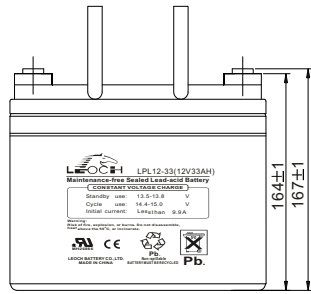
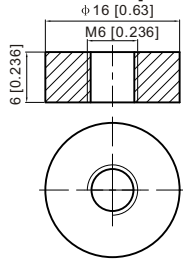
Constant Power Discharge (Watts) at 25 °C (77°F)

F.V/Time	5min	10min	15min	20min	30min	45min	1h	2h	3h	4h	5h	6h	8h	10h	20h
1.85V/cell	104.0	80.1	67.5	58.1	48.0	36.6	30.8	19.8	15.7	12.8	10.4	9.12	7.33	6.27	3.49
1.80V/cell	138.1	101.2	80.5	67.7	55.8	42.2	34.3	21.5	16.8	13.6	11.1	9.75	7.76	6.64	3.52
1.75V/cell	152.5	109.4	86.9	72.2	57.5	43.4	35.7	22.2	17.1	13.9	11.3	9.98	7.87	6.69	3.55
1.70V/cell	163.3	116.6	91.5	75.3	59.5	45.0	36.8	23.0	17.5	14.2	11.6	10.17	7.97	6.76	3.61
1.65V/cell	177.6	124.7	96.5	79.4	62.2	45.7	37.7	23.5	18.2	14.6	11.9	10.4	8.08	6.88	3.66
1.60V/cell	191.5	132.4	101.6	83.7	65.3	47.4	38.9	24.2	18.7	15.0	12.2	10.6	8.14	6.95	3.67

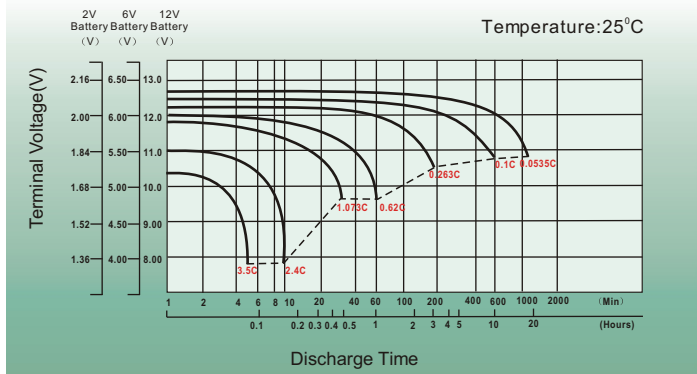
Dimensions

T6 Terminal

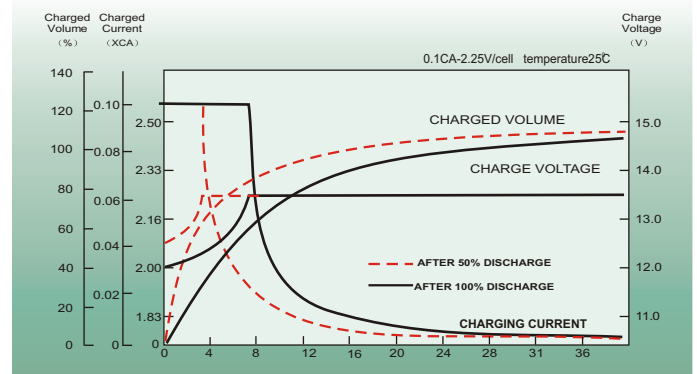
Unit: mm [inches]



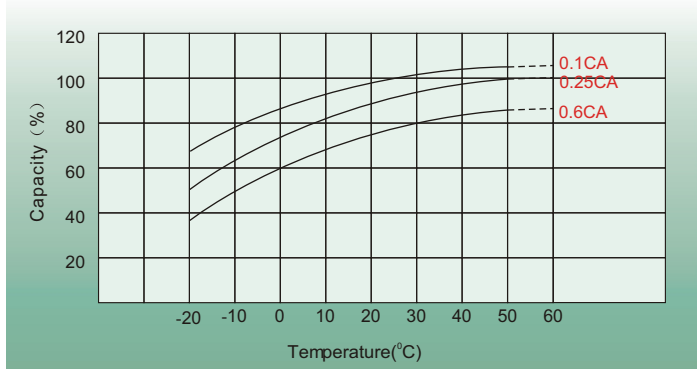
Discharge Characteristics



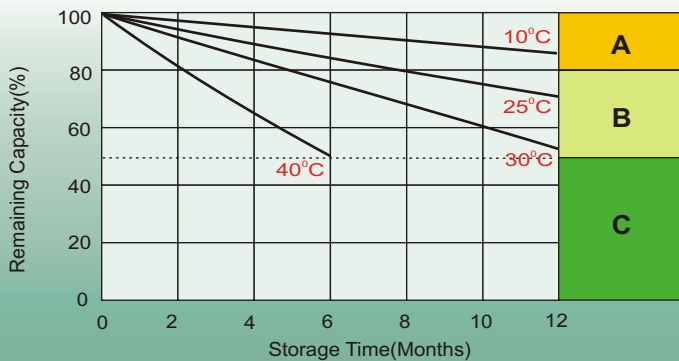
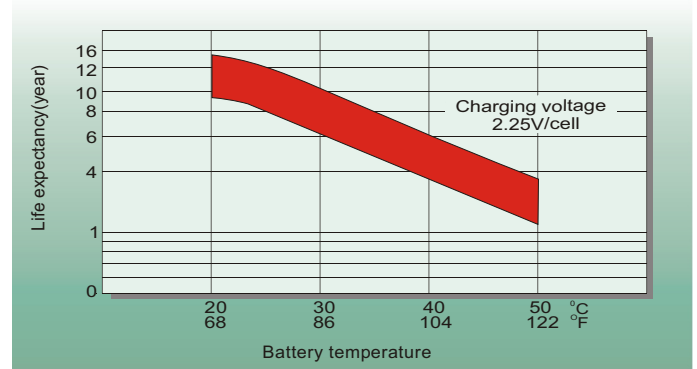
Float Charging Characteristics



Temperature Effects in Relation to Battery Capacity



Effect of Temperature on Long Term Float Life



Self Discharge Characteristics

- A** No supplementary charge required
(Carry out supplementary charge before use if 100% capacity is required.)
- B** Supplementary charge required before use. Optional charging way as below:
 1. Charged for above 3 days at limited current 0.25CA and constant volatge 2.25V/cell.
 2. Charged for above 20 hours at limited current 0.25CA and constant volatge 2.45V/cell.
 3. Charged for 8~10 hours at limited current 0.05CA .
- C** Supplementary charge may often fail to recover the capacity.
The battery should never be left standing till this is reached.

Sales Office

China sales office:

Add: 5th Floor, Xinbaohui Bldg., Nanhai Blvd.,
Nanshan, Shenzhen, China. 518052
Tel: +86-755-86036060 (100 lines)
Fax: +86-755-26067269
E-mail: export@leoch.com
Http://www.leoch.com

North Americasales office:

Add: 19751 Descartes, Unit A,
Foothill Ranch, CA 92610, USA
Tel: 949-588-5853
Fax: 949-588-5966
E-mail: sales@leoch.us
Http://www.leoch.us

Europe sales office:

Add: 9B Wheatstone Park, Waterwells
Business Park, Gloucester, GL2 2AQ. UK.
Tel: +44(0) 01452 729428
Fax: +44 (0)1452-690125
E-mail: Sales.Europe@leoch.com