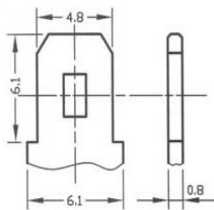
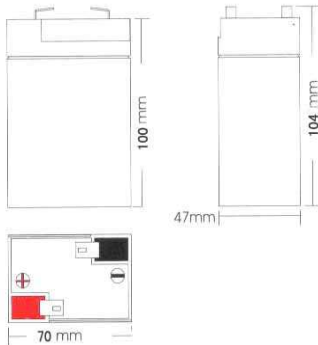


DD 06040 - 6V 4Ah - C20



Features

- Special grid alloy and plate design
- Long service life
- High charging performance
- High gas recombination technology
- Low-self discharge characteristic
- Wide operating temperature range



F1 Terminal

Application

- Measuring instrument
- Medical equipments
- Telephone sets
- Lighting equipment
- Security & alarm systems
- UPS power supply
- Power station and telecom station



ISO9001
ISO14000



CGZ3100705-02429-E

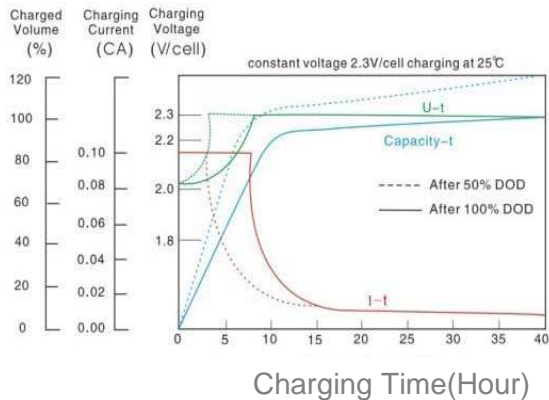
Specification

| | |
|--|--|
| Cell per unit | 3 |
| Normal Voltage | 6V |
| Normal Capacity | 4 Ah |
| Weight | Approx. 0,64 Kg (1,411 lbs) |
| Internal Resistance | Approx. 20,4 mΩ |
| Normal Operating Temperature Range | 25°C |
| Recommended Maximum Charging Current Limit | 1 A |
| Float Charging Voltage | 6,80 to 6,9VDC/unit Average at 25°C (77°F) |
| Equalization and Cycle Service | 7,05 to 7,2VDC/unit Average at 25°C (77°F) |
| Self Discharge | Reddot Batteries can be stored for more than 6 months at (25°C/77°F). Please charge batteries before using. For higher temperatures the time interval will be shorter. |
| Terminal | F1 |

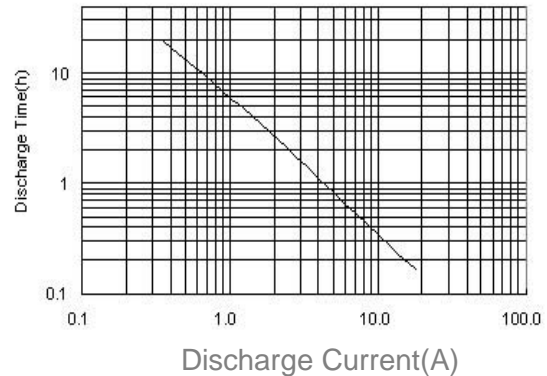
Characteristics

| | | |
|----------------|--------------------|-------|
| Rated Capacity | 20 hour rate(0,2A) | 4,0AH |
| | 10 hour rate(0,4A) | 3,8AH |
| | 5 hour rate(0,64A) | 3,2AH |
| | 27 min rate(4A) | 1,8AH |
| | 7 min rate(12A) | 1,4AH |

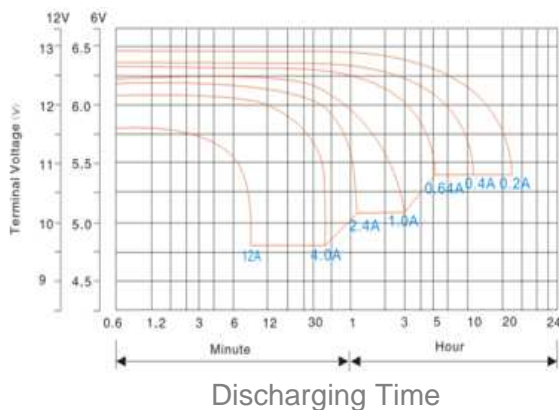
Charging Characteristics(25°C/77°F)



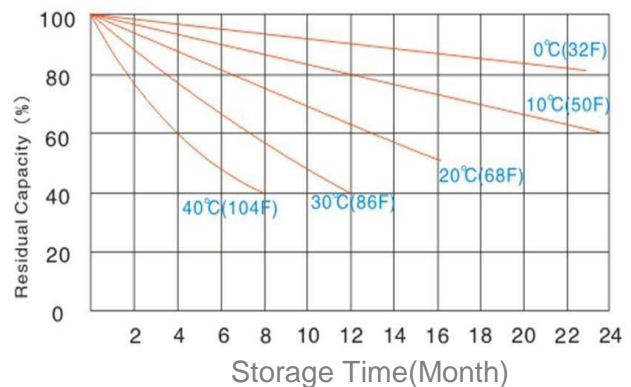
The Relation between Discharging Current and Discharging time(25°C/77°F)



Discharging Characteristic(25°C/77°F)



Self-Discharging Characteristic(25°C/77°F)



Constant Current Discharge Characteristics (Amperes at 25°C)

| Cut-off Voltage/cell | 5min | 10min | 20min | 45min | 1Hr | 2Hr | 4Hr | 8Hr | 10Hr | 20Hr |
|----------------------|------|-------|-------|-------|------|------|------|-------|-------|-------|
| 1,70 | 15,7 | 10,2 | 5,70 | 2,96 | 2,47 | 1,54 | 0,85 | 0,485 | 0,408 | 0,221 |
| 1,75 | 15,5 | 10,1 | 5,64 | 2,94 | 2,45 | 1,48 | 0,85 | 0,481 | 0,404 | 0,218 |
| 1,80 | 15,4 | 10,0 | 5,59 | 2,90 | 2,43 | 1,42 | 0,84 | 0,476 | 0,400 | 0,216 |

Constant Power Discharge Characteristics (Watts at 25°C)

| Cut-off Voltage/cell | 5min | 10min | 20min | 45min | 1Hr | 2Hr | 4Hr | 8Hr | 10Hr | 20Hr |
|----------------------|-------|-------|-------|-------|-------|-------|-------|-------|-------|-------|
| 1,70 | 94,05 | 61,18 | 34,16 | 17,73 | 14,81 | 9,210 | 5,124 | 2,908 | 2,421 | 1,308 |
| 1,75 | 93,07 | 60,64 | 33,84 | 17,62 | 14,70 | 8,853 | 5,092 | 2,886 | 2,400 | 1,297 |
| 1,80 | 92,10 | 60,00 | 33,51 | 17,40 | 14,59 | 8,497 | 5,059 | 2,854 | 2,378 | 1,286 |

All mentioned values are average values